

A SALUTE TO AN



CUSTOMER

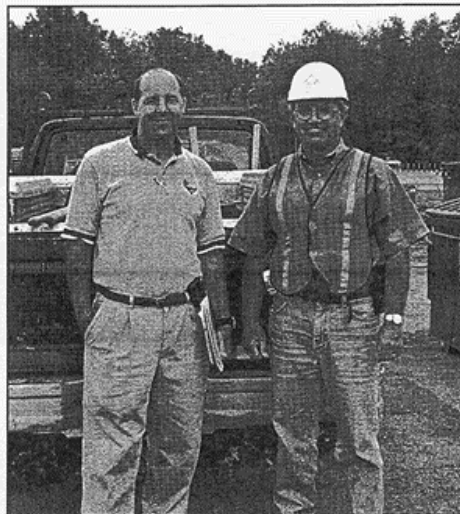
OAKGROVE CONSTRUCTION COMPANY

How this 38-year-old family business is helping to build western New York

Working for 38 years in road and bridge construction, Oakgrove Construction Company of Elma, New York, is well versed in the day-to-day demands of the construction business. Founded in 1961 by Jim May and later joined by Ken Rawe and Vincent Barbera, Oakgrove has remained an integral part of western New York's development throughout the years.

Today, with the help of equipment from Rupp Rental/Anderson Equipment Company, second-generation owners Doug May, Ken Rawe Jr., and Vince Barbera are proving that they are stronger than ever by venturing into one of Oakgrove's largest jobs, as well as one of the largest road work jobs for all of western New York.

Ken Rawe, Jr., right, Project Manager for Oakgrove Construction Company, with Dennis Bigham, left, Sales Representative for Rupp Rental/Anderson Equipment Company. Oakgrove specializes in road and bridge construction in western New York.



How big, you ask?

The \$47M reconstruction of the Niagara section of the New York State Thruway, which extends from Ontario Street to the South Grand Island Bridge, includes completely replacing six bridges while performing a deck overlay on the remaining two. Additionally, Oakgrove will remove and replace all subbase (150,000 cu. yds.), guardrail (40,000 ft.), concrete pavement (50,000 cu. yds.), blacktop (100,000 tons) and drainage (12,000 ft. of pipe).

Let's give them a hand . . .

Oakgrove began work on this project in April 1998 and has been calling on Rupp Rental/Anderson Equipment for its "in-field" needs. "Rupp/Anderson provides great service and equipment and has a large inventory of special attachment equipment," stated Rawe.

In addition, Rawe also related that Oakgrove chooses Rupp Rental/Anderson Equipment not only because of the quality equipment, but because of the efforts of Sales Representative Dennis Bigham. Dennis has been instrumental in renting 22 machines to Oakgrove since the start of the project.

For the reconstruction job's 235,000 cubic yards of excavation, three Komatsu PC400 hydraulic excavators are needed. Two Komatsu PC300 excavators are also being used. One is equipped with a LaBounty UP50 Universal Processor for demolishing bridge decks and cutting the rebar inside the concrete decking. The other is being used primarily for drainage purposes.

Other equipment from Rupp Rental/Anderson Equipment being used for the duration of the two-year project include Komatsu PC220 and PC200 excavators, D58 dozer, GD650 grader and two Moxy MT30 trucks. Equipped with a Tramac 7,500-pound



hammer, the PC220 is being used for the demolition of bridges, decks, piers and abutments. The PC200, with a LaBounty grapple, is being used to set large limestone blocks and, with a LaBounty Bucket Linkage Shear, for cutting guardrail and fencing, as well as loading sheet pile onto trucks.

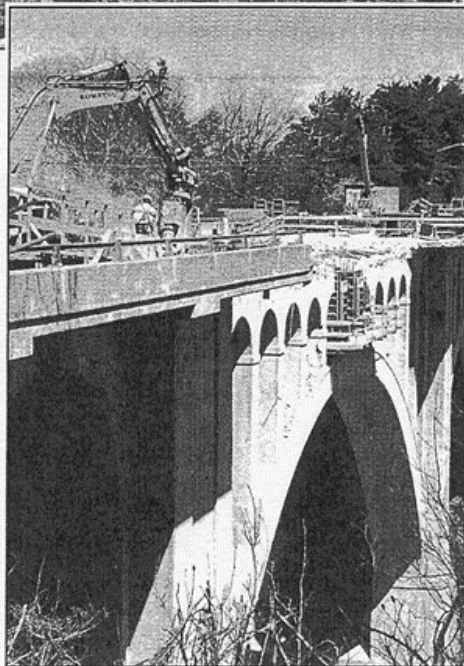
The operator on the Komatsu D58 low-ground-pressure dozer is working on grading, slope work and stripping topsoil, while the two Moxy MT30 trucks have been used to help keep the project environmentally safe by transporting the old subbase to be crushed, recycled and reused on the same project. They also have been used to transport all other excavation or demolition material to another location on site.

The final grading will be done with a Komatsu GD650 motor grader. Operator Claude Snyder related that it took only a short time to become familiar with the GD650 and he now feels that it outperforms all other major competitive graders.

Oakgrove will also be constructing a one-mile bicycle path connecting two existing paths along the Niagara River. The use of a Takeuchi TB035 mini-excavator with rubber tracks has been vital to Oakgrove's efforts around the bike path, said Rawe, to ensure no damage to pavement and landscaped areas.

There's more . . .

In addition to the \$47M job, Oakgrove is also in the process of working on a super-structure reconstruction



A Komatsu PC300LC excavator with LaBounty UP50 Universal Processor is being used to demolish a bridge deck on the Route 20 bridge over Eighteen Mile Creek Road in the town of Hamburg.

on the Route 20 bridge over Eighteen Mile Creek Road in the town of Hamburg. Originally built in 1928, the double-arch bridge lies approximately 90 feet above water, making this \$6.5M job quite a challenge. In addition to its height, Oakgrove must increase the strength of the 70-year-old, 415-foot bridge, all while maintaining its historical architectural features.

Continued . . .

Oakgrove Construction tackles large jobs

... continued



Operator Mike Fintak is excavating existing pavement with a Komatsu PC400 excavator rented from Rupp Rental/Anderson Equipment Company.

"We are using many neat processes," stated Project Superintendent Larry Zack, referring to the rehabilitation of the bridge. Oakgrove is demolishing the bridge's columns, beams and deck with the help of a Komatsu PC300 equipped with a LaBounty UP50 Universal Processor. This attachment has primarily been used to break apart the 30" bridge deck and downsize large pieces of concrete.

By the end of this job, Oakgrove will have reconstructed 42 main beams, 116 longitudinal beams and 96 columns. In addition, crews will pour a 13" deck with a 2" deck overlay. Over 1,700 cubic yards of concrete will be poured to perform these tasks.

The Route 20 bridge project began in April of 1999 and is scheduled to be completed within a two-year time period.

In the future . . .

When asked about future plans, Project Manager Vince Barbera simply stated "more construction," which is exactly why Oakgrove Construction Company is one of the largest construction companies in the western New York area.

With almost four decades behind them and great ambition for success, the company has proven that it will be firmly "rooted" in western New York for many years to come.